



VATECH ASSURANCE



No More than what you *want*, No Less than what you *need*



NEW

i3D Smart

- One Scan, Two Images : 2D and 3D Images produced in One Scan
- Extended 10 x 9 (Anatomical 12X9) FOV
- Innovative Compressed Sensing Technology



VATECH ASSURANCE

i3D Smart

Smart Innovation for **ACCURATE DIAGNOSIS**

One Scan, Two Images

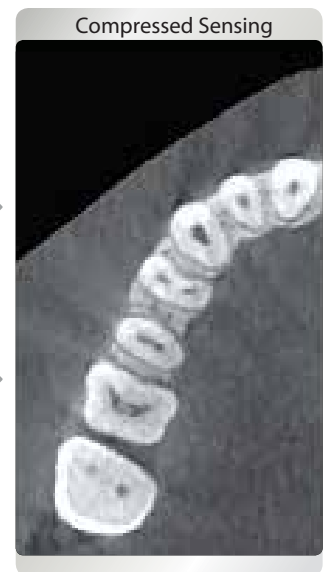
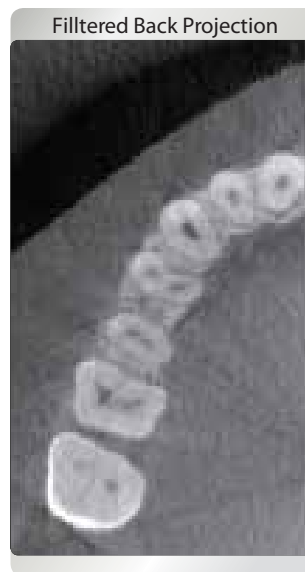
One scan with i3D Smart gives you not just a CT image but also an Auto Pano image, which we are accustomed to. This means, patients who require both images do not need to undergo two X-ray scans. Also, CT and Auto Pano images are displayed within One Viewer.



*Panoramic exclusive mode is provided

Innovative Compressed Sensing Technology

3D image quality is dramatically improved based on the innovative image reconstruction technology.



Extended Arch Shaped FOV

The innovative FOV of i3D Smart provides an arch-shaped volume, which shows a wider view of dentition compared to other devices of the same FOV. When the tooth is lying on its side, there is a high possibility that the tooth will be cut out of the image. The "arch-shaped volume" eliminates this possibility and shows the hidden dentition area.

